



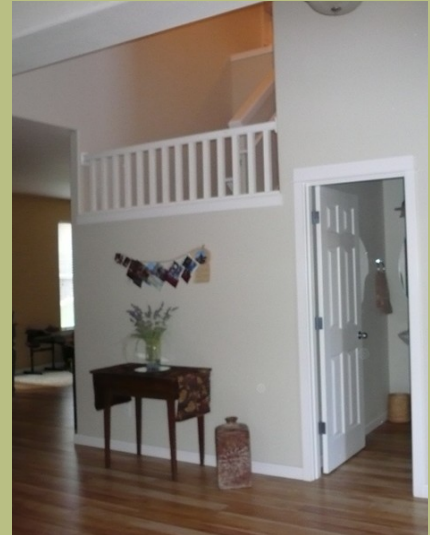
Quality & Comfort Have Been The Main Considerations In This Craftsmanship Style Home. A Soaring Foyer Entry W/High Ceilings Greets Guest & Leads Them To The Heart Of the Home. A Separate Formal DR W/Large Windows Overlooking A Water Feature Offers The Perfect Setting For The Simple Joys Of Good Friends And Good Food. Huge PRIVATE Back Yard



The Right Home In Prime Location @ The Best Price

11333 SE Bethany Drive

The Dazzling Gourmet Island Kitchen Has All Modern Appliances & A Commercial Grade Dacor Gas Range. It Is The Family Center That Lets The Soul Of The House Shine Through. Efficiently Designed Has A Pantry, Ample Storage, Counter Space & Opens To A Lrg Great Room W/Walls Of Windows & A Gas Fireplace. Vaulted Master Retreat W/A Fireplace & Adjoined Bath. This Is A MUST SEE!



KATERINA PREMIER PROPERTIES INC

KATERINA, MBA-MPA

Principal Broker

503-997-5459 (Mobile)

1-888-851-8448 (Toll Free)

info@katerinaonline.com

www.katerinaonline.com



KATERINA PREMIER PROPERTIES

10210 SE Sunnyside Rd St
300